



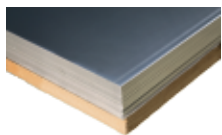
POLY
LANEMA

SHEETS

ALUMINIUM

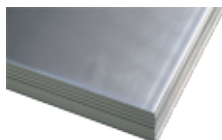
AW 5754

(Al Mg3)



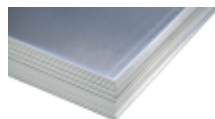
AW 6082

(Al Si1 Mg Mn)



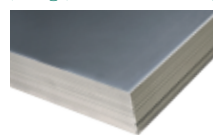
AW 1050

(Al 99.5)



AW 5005

(AlMg1) **AQ**



AW 5754 TREADPLATES

5 BAR

2 BAR

TOP GRIP



| THI. (mm) | DIMENSIONS (mm) | AW5754 HT11 | AW6082 T651 | AW1050 H24 | AW5005 H24 | THI. (mm) | DIMENSIONS (mm) | AW5754 HT11 | AW6082 T651 | AW1050 H24 | AW5005 H24 |
|-----------|-----------------|-------------|-------------|------------|------------|-------------|-----------------|-------------|-------------|------------|------------|
| 0.3 | 1000 x 2000 | ● | - | ● | - | 2.0 | 800 x 2000 | - | - | ● | - |
| | 1250 x 2500 | ● | - | ● | - | | 900 x 2100 | - | - | ● | - |
| | 1500 x 3000 | ● | - | ● | - | | 1000 x 2000 | ● | ● | ● | ● |
| 0.4 | 1000 x 2000 | ● | - | ● | - | 1250 x 2500 | ● | ● | ● | ● | |
| | 1250 x 2500 | ● | - | ● | - | 1250 x 3000 | - | - | ● | ● | |
| | 1500 x 3000 | ● | - | ● | - | 1250 x 4000 | - | - | ● | ● | |
| 0.5 | 1000 x 2000 | ● | - | ● | - | 1500 x 3000 | ● | ● | ● | ● | |
| | 1250 x 2500 | ● | - | ● | - | 1500 x 4000 | - | - | ● | ● | |
| | 1500 x 3000 | ● | - | ● | - | 2000 x 4000 | ● | ● | ● | - | |
| 0.6 | 1000 x 2000 | ● | - | ● | - | 2.2 | 1000 x 2000 | ● | - | ● | - |
| | 1250 x 2500 | ● | - | ● | - | | 1250 x 2500 | ● | - | ● | - |
| | 1500 x 3000 | ● | - | ● | - | | 1500 x 3000 | ● | - | ● | - |
| 0.7 | 1000 x 2000 | ● | - | ● | - | 2.5 | 1000 x 2000 | ● | ● | ● | - |
| | 1250 x 2500 | ● | - | ● | - | | 1250 x 2500 | ● | ● | ● | - |
| | 1500 x 3000 | ● | - | ● | - | | 1500 x 3000 | ● | ● | ● | - |
| 0.8 | 1000 x 2000 | ● | - | ● | - | 3.0 | 1000 x 2000 | ● | ● | ● | - |
| | 1250 x 2500 | ● | - | ● | - | | 1000 x 3000 | - | - | - | ● |
| | 1250 x 3000 | - | - | ● | - | | 1000 x 4000 | - | - | - | ● |
| 0.9 | 1500 x 3000 | ● | - | ● | - | 1250 x 2500 | ● | ● | ● | ● | |
| | 1000 x 2000 | ● | - | ● | - | 1500 x 3000 | ● | ● | ● | ● | |
| | 1250 x 2500 | ● | - | ● | - | 1000 x 2000 | ● | ● | ● | - | |
| 1.0 | 1250 x 3000 | - | - | ● | - | 4.0 | 1250 x 2500 | ● | ● | ● | - |
| | 1000 x 2000 | ● | - | ● | - | | 1500 x 3000 | ● | ● | ● | - |
| | 1250 x 2500 | ● | - | ● | - | | 1000 x 2000 | ● | ● | ● | - |
| 1.2 | 1500 x 3000 | ● | - | ● | - | 5.0 | 1250 x 2500 | ● | ● | ● | - |
| | 1000 x 2000 | ● | - | ● | - | | 1500 x 3000 | ● | ● | ● | - |
| | 1250 x 2500 | ● | - | ● | - | | 1000 x 2000 | ● | ● | ● | - |
| 1.4 | 1500 x 3000 | ● | - | ● | - | 6.0 | 1250 x 2500 | ● | ● | ● | - |
| | 1000 x 2000 | ● | - | ● | - | | 1500 x 3000 | ● | ● | ● | - |
| | 1250 x 2500 | ● | - | ● | - | | 1000 x 2000 | ● | ● | ● | - |
| 1.5 | 1500 x 3000 | ● | - | ● | - | 8.0 | 1250 x 2500 | ● | ● | ● | - |
| | 1000 x 2000 | ● | - | ● | - | | 1500 x 3000 | ● | ● | ● | - |
| | 1250 x 2500 | ● | - | ● | - | | 1000 x 2000 | ● | ● | ● | - |
| 1.6 | 1500 x 3000 | ● | - | ● | - | 10.0 | 1250 x 2500 | ● | ● | ● | - |
| | 1000 x 2000 | ● | - | ● | - | | 1500 x 3000 | ● | ● | ● | - |
| | 1250 x 2500 | ● | - | ● | - | | 1000 x 2000 | ● | ● | ● | - |
| 1.8 | 1500 x 3000 | ● | - | ● | - | 12.0 | 1250 x 2500 | ● | ● | ● | - |
| | 1000 x 2000 | ● | - | ● | - | | 1500 x 3000 | ● | ● | ● | - |
| | 1250 x 2500 | ● | - | ● | - | | 1000 x 2000 | ● | ● | ● | - |

● Usually available in stock
● Not usually available in stock
Delivery time on request
Other thicknesses and dimensions possible on request

| THI. (mm) | DIMENSIONS (mm) | 5 BAR | 2 BAR | TOP GRIP |
|-----------|-----------------|-------|-------|----------|
| 1.5 | 1000 x 2000 | ● | - | - |
| | 1250 x 2500 | ● | ● | - |
| 2.0 | 1000 x 2000 | ● | - | - |
| | 1250 x 2500 | ● | ● | - |
| 2.5 | 1000 x 2000 | ● | - | ● |
| | 1250 x 2500 | ● | ● | ● |
| 3.0 | 1000 x 2000 | ● | - | ● |
| | 1250 x 2500 | ● | - | ● |
| 4.0 | 1000 x 2000 | ● | - | ● |
| | 1250 x 2500 | ● | - | ● |
| 5.0 | 1000 x 2000 | ● | - | ● |
| | 1250 x 2500 | ● | - | ● |
| 6.0 | 1000 x 2000 | ● | - | - |
| | 1250 x 2500 | ● | - | - |
| 8.0 | 1000 x 2000 | ● | - | - |
| | 1250 x 2500 | ● | - | - |

● Usually available in stock
● Not usually available in stock
Delivery time on request
Other thicknesses and dimensions possible on request

IMMEDIATE DELIVERY THINKING **OF YOU!**

WATER JET CUTTING SERVICE!

FASTER | MORE PRECISION | COST REDUCTION
DELIVERIES IN 24H



PLASTIFICATION SERVICE!

WITH PVC LASER OR PVC FIBER FILM
IN ONE OR BOTH FACES

www.polylanema.pt
polylanema@lanema.pt
+351 256 581 400

